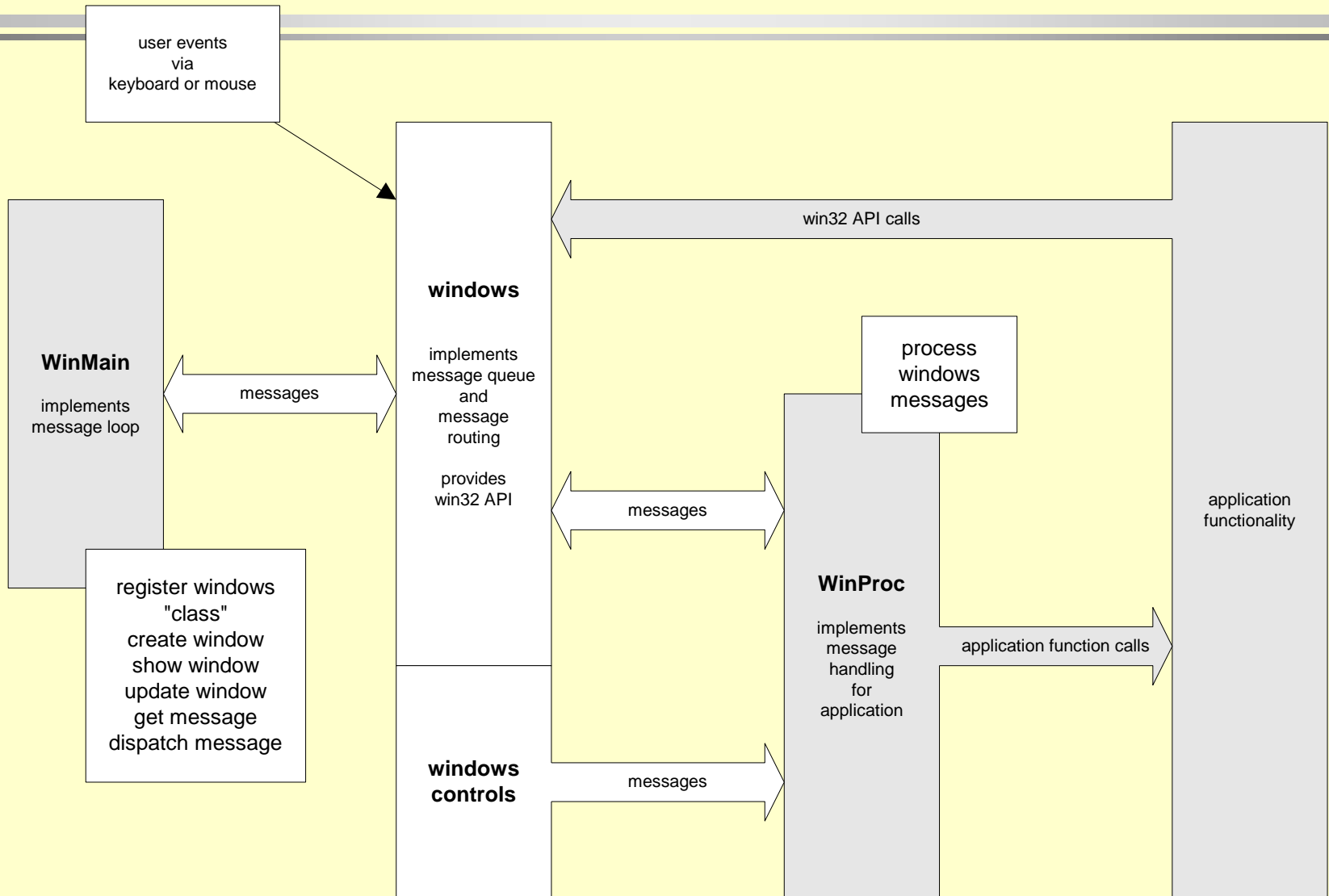

Basic Windows

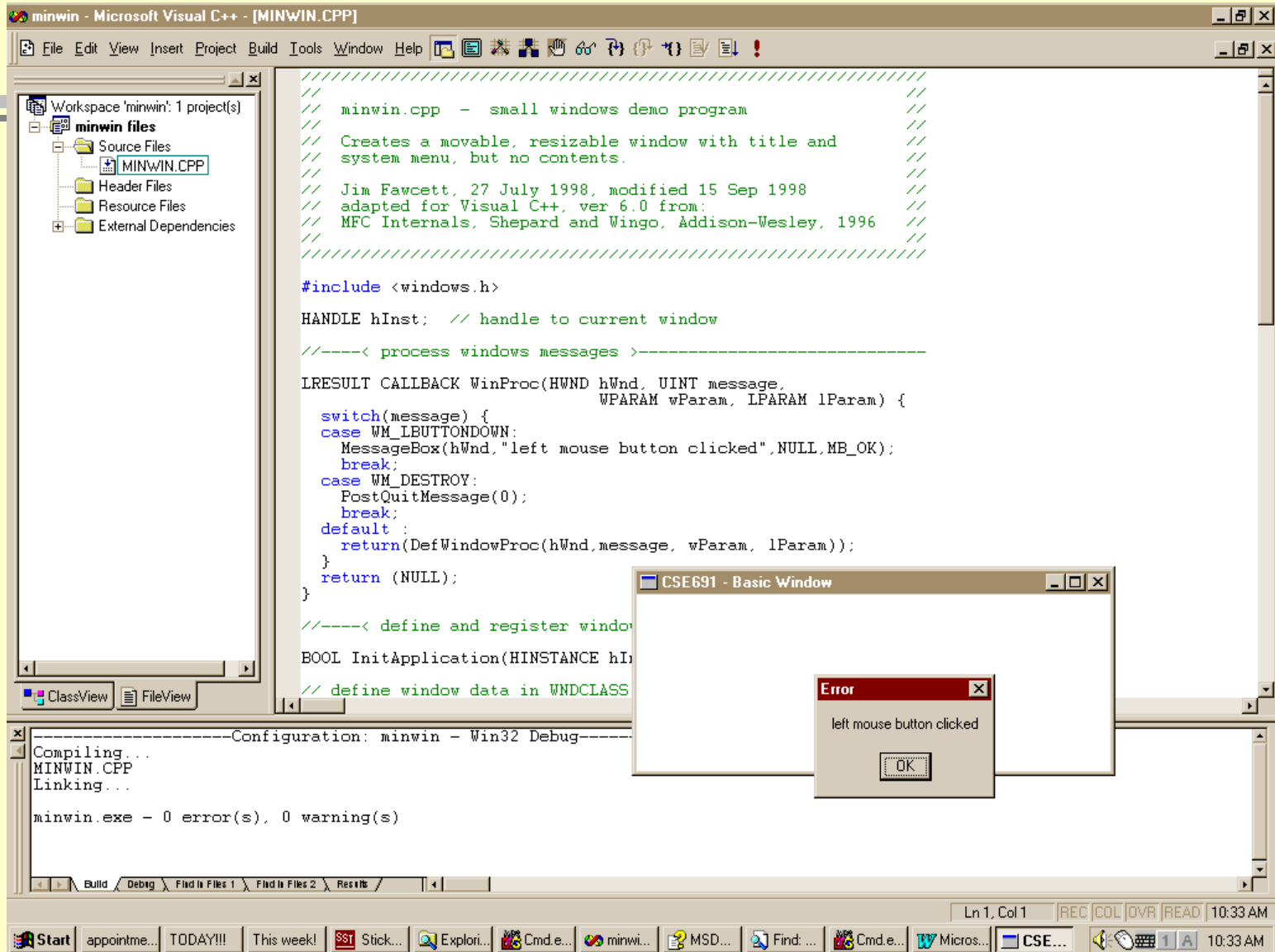
Jim Fawcett

CSE681 – Software Modeling and Analysis

Fall 2004

Classic Windows Processing



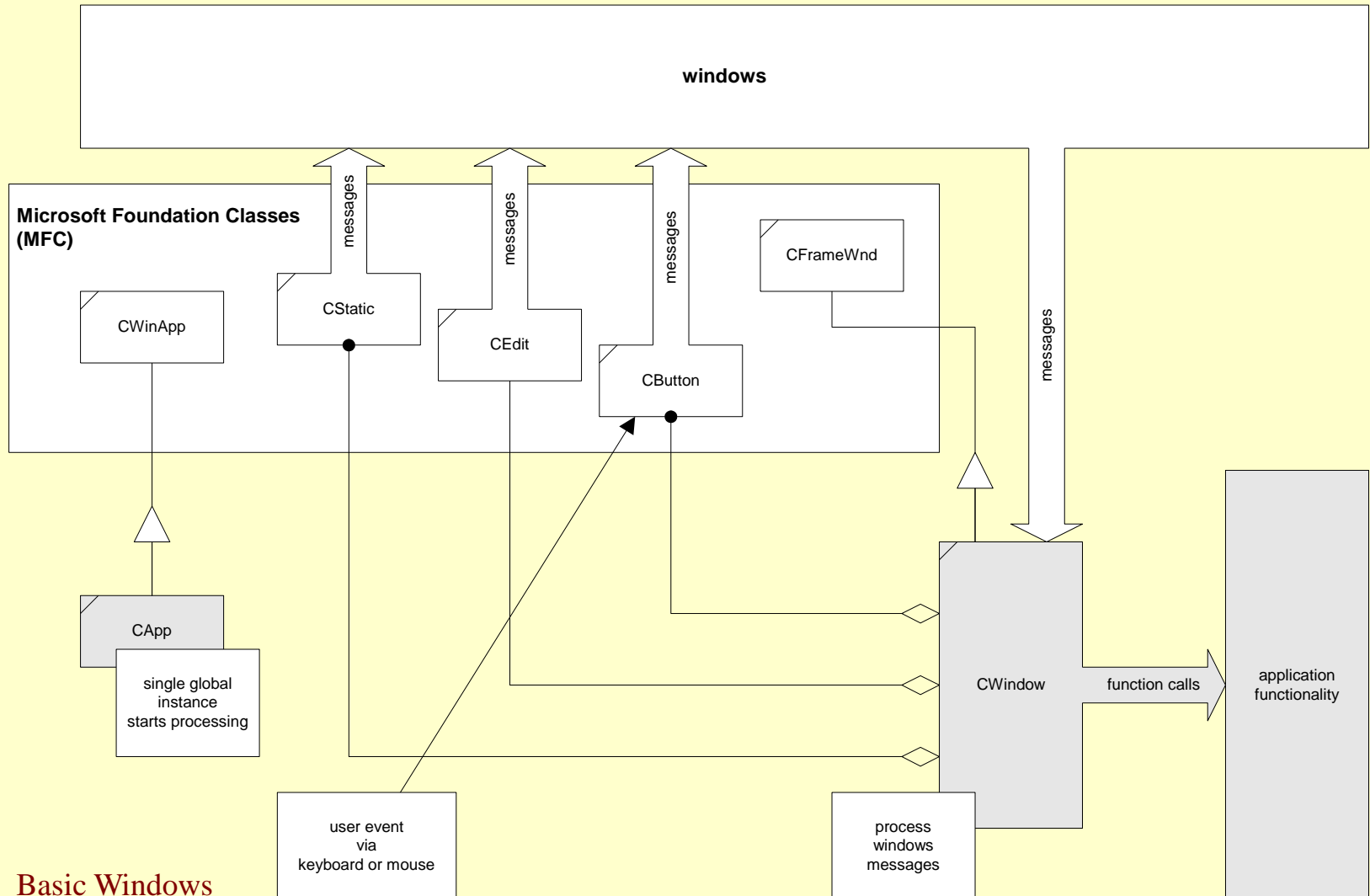


Where is Example Code?

- `CoreTechnologies/WindowsProgramming/code/BasicWindows/MinWin`
- `CoreTechnologies/WindowsProgramming/code/BasicWindows/MFCWin`
- `CSE778/Lecture1/MFCDialog`
- `CSE778/Lecture1/MFCFrameWindow`
- `CSE778/Lecture1/DataViz`
- `CSE681/code/WinFormDemo`

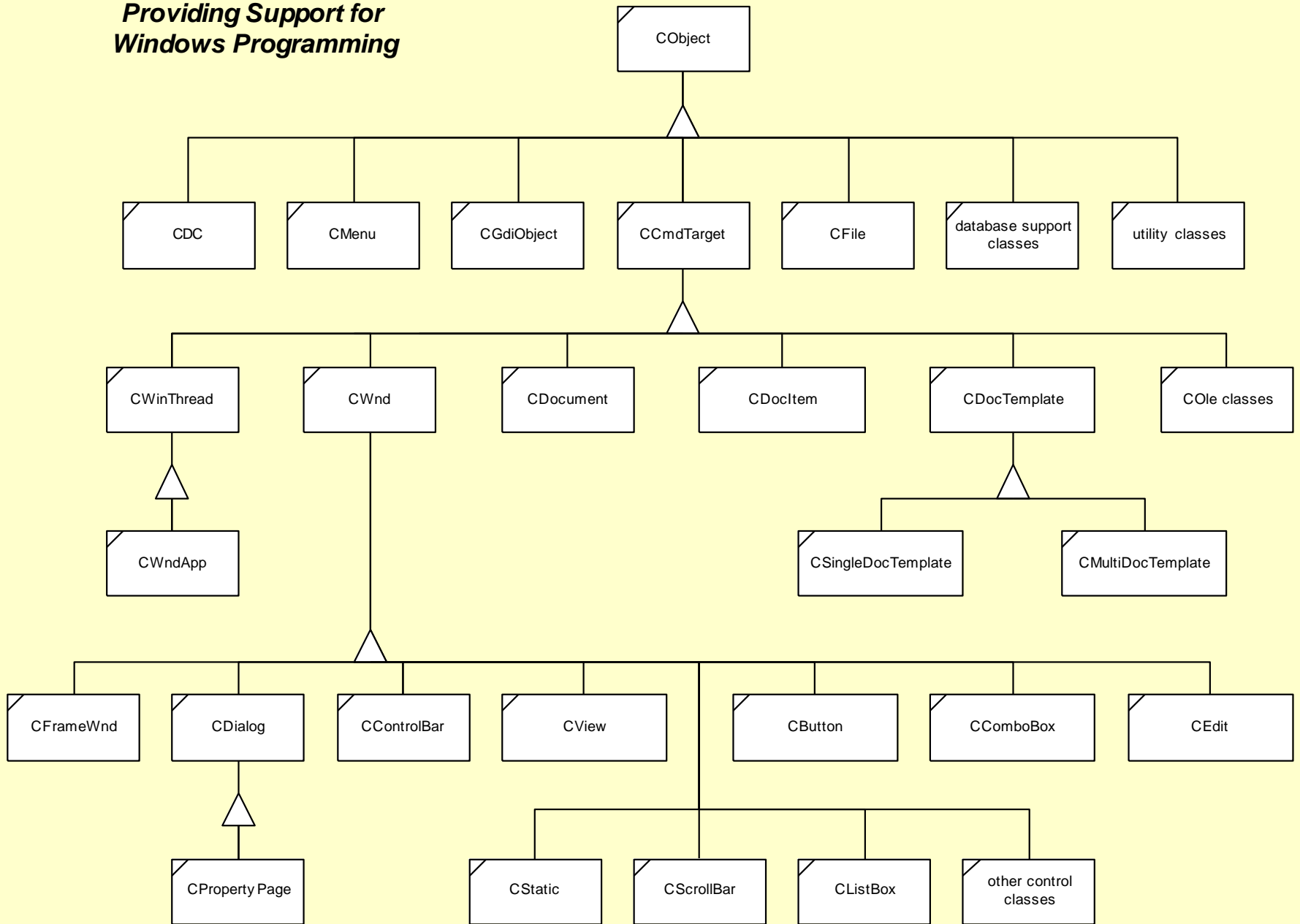


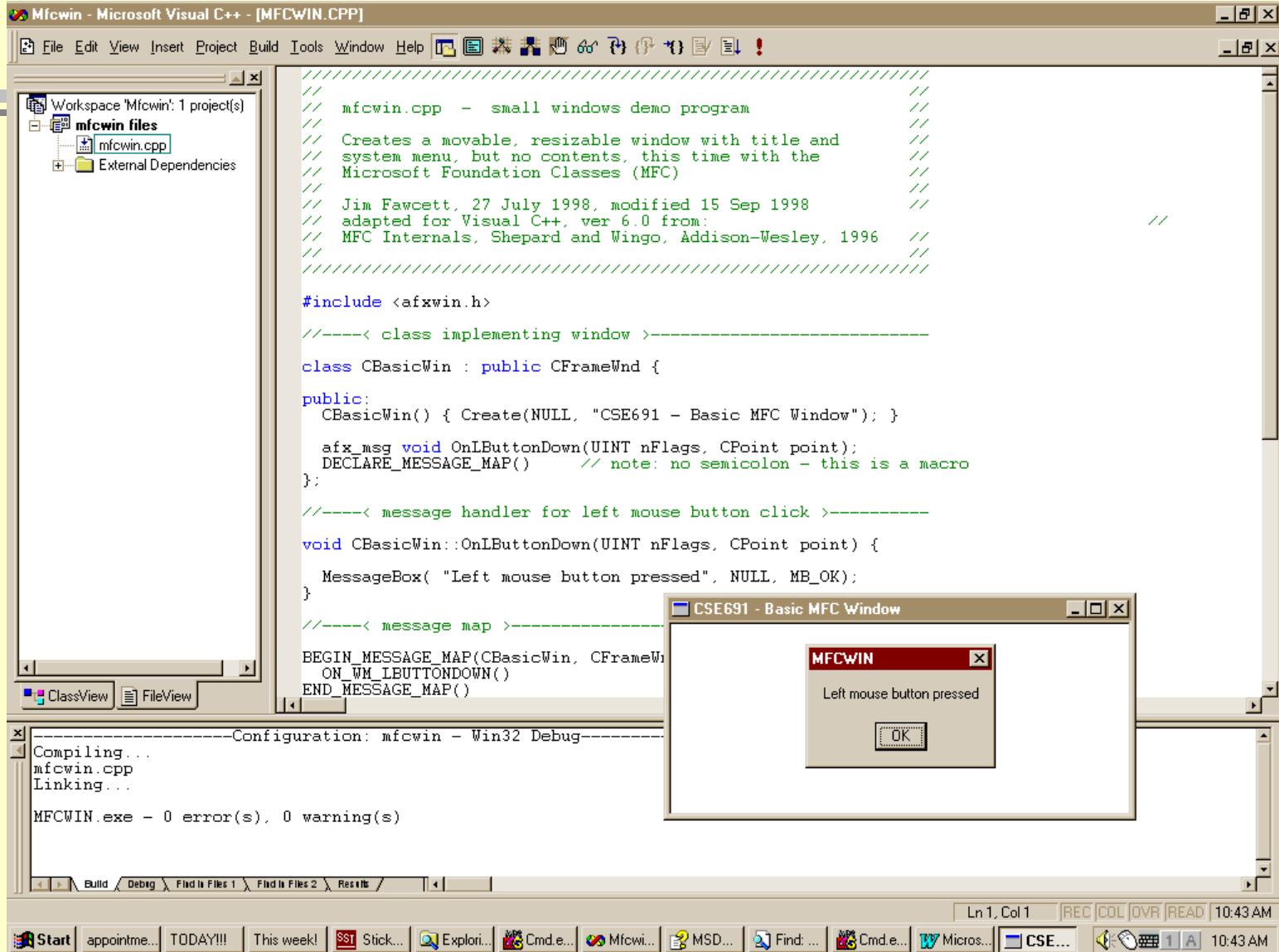
Windows Processing Using MFC



Basic Windows

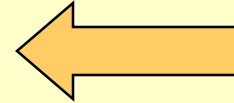
**Partial MFC Hierarchy
Providing Support for
Windows Programming**



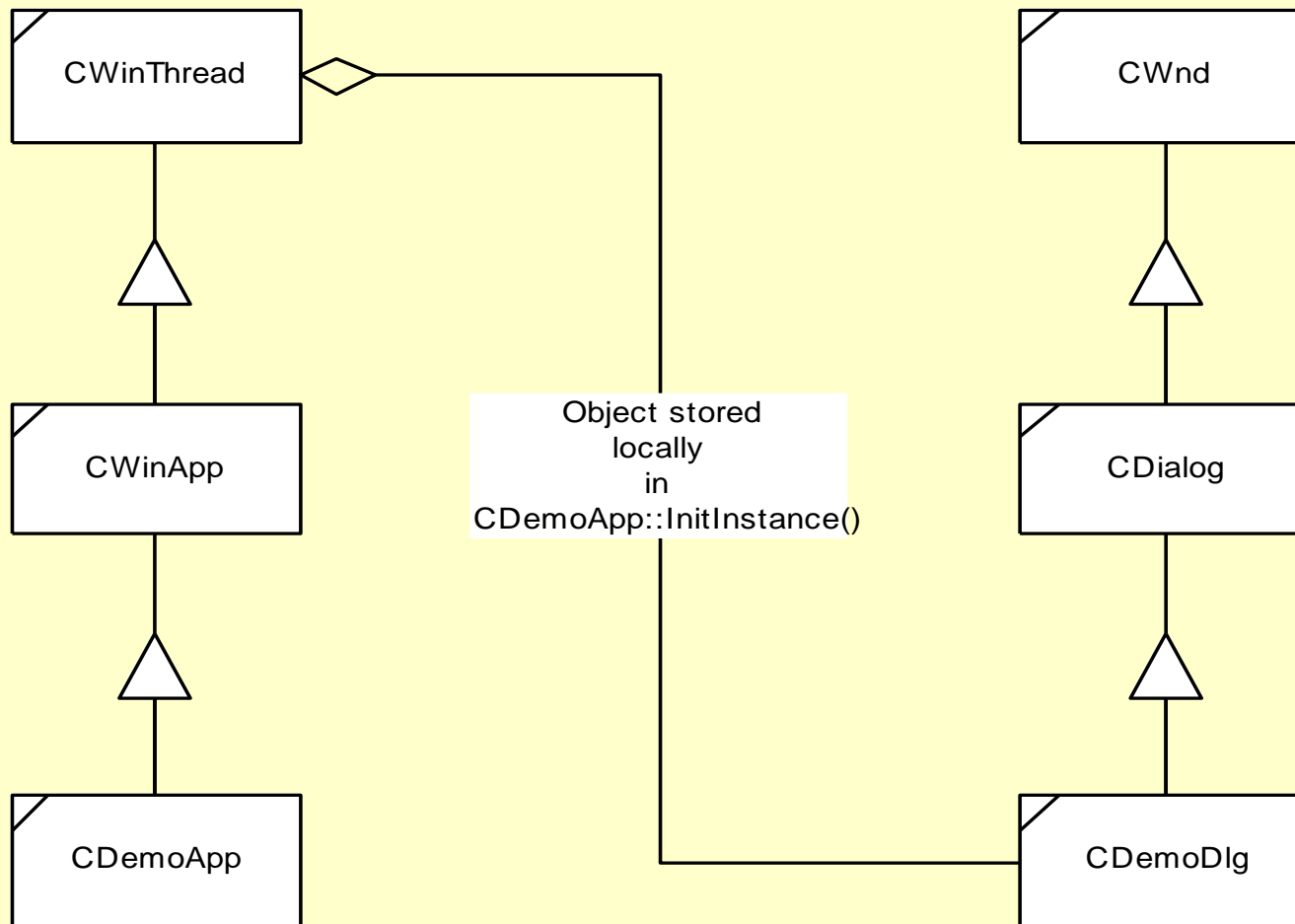


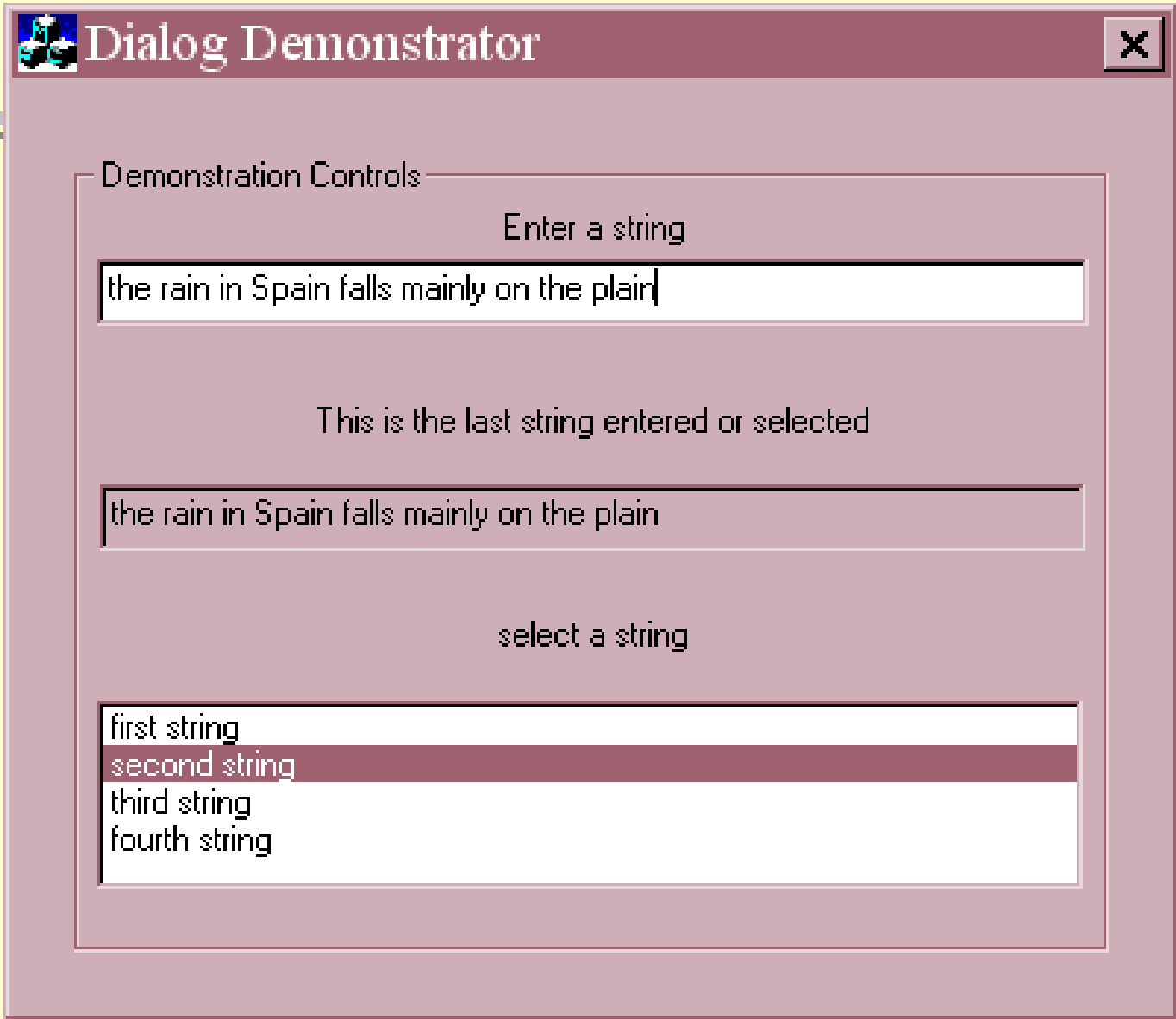
Where is Example Code?

- CSE681/code/MinWin
- CSE778/Lecture1/BasicWindows/MFCWin
- CSE778/Lecture1/MFCDialog
- CSE778/Lecture1/MFCFrameWindow
- CSE778/Lecture1/DataViz
- CSE681/code/WinFormDemo



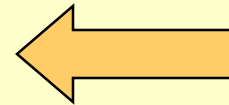
MFC-Based Dialog Application





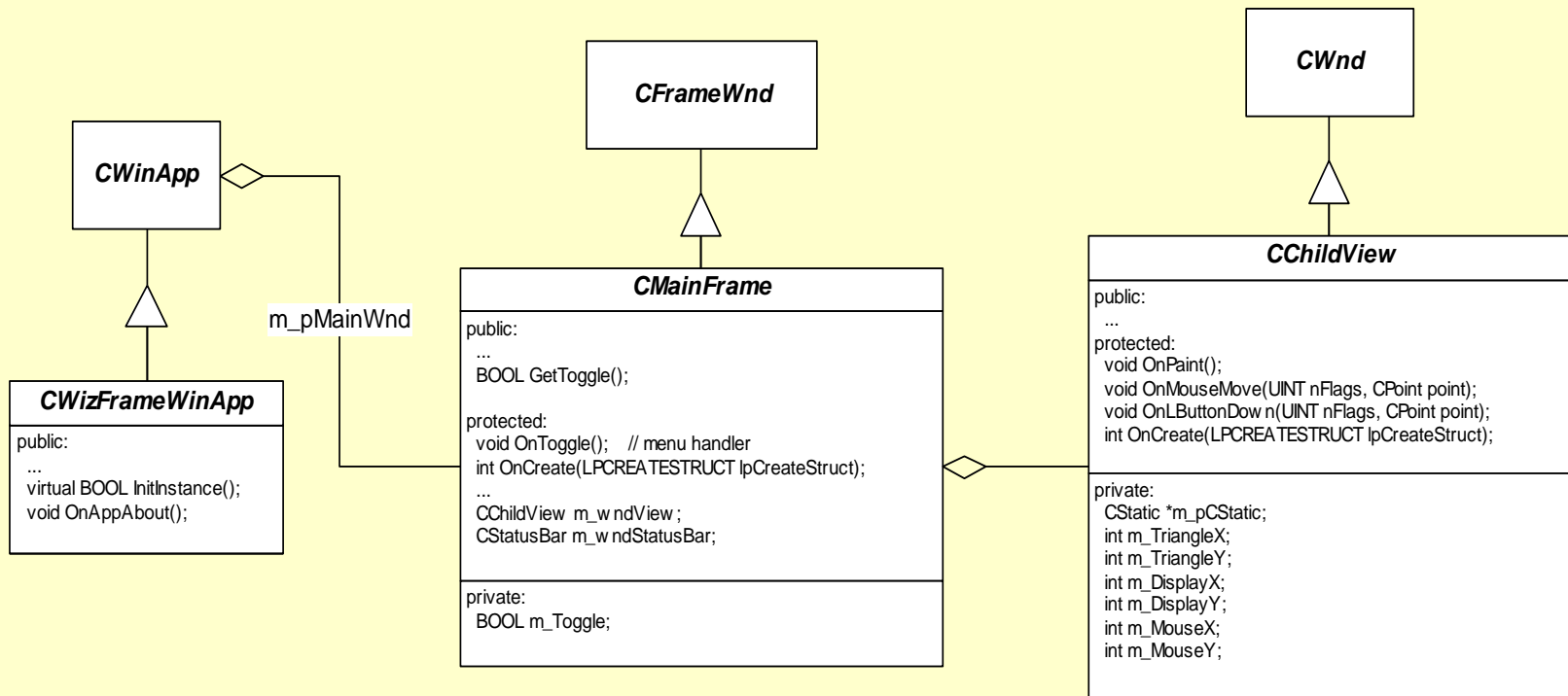
Where is Example Code?

- CSE681/code/MinWin
- CSE778/Lecture1/BasicWindows/MFCWin
- CSE778/Lecture1/MFCDialog
- CSE778/Lecture1/MFCFrameWindow
- CSE778/Lecture1/DataViz
- CSE681/code/WinFormDemo

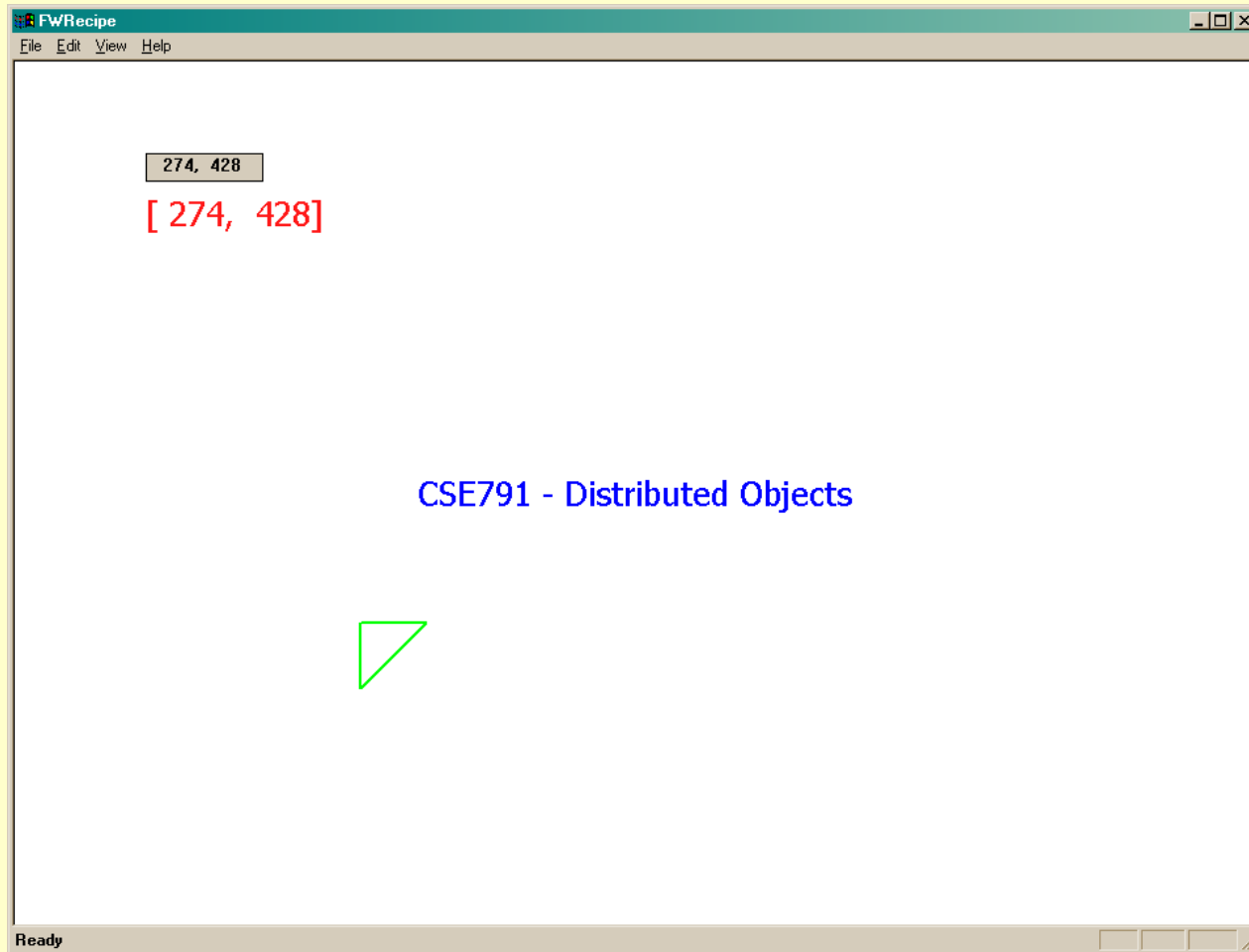


MFC-Based Frame Window

*Frame Window Developed with Class Wizard
Does not use Document / View Architecture*

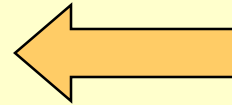


MFC-Based Frame Window

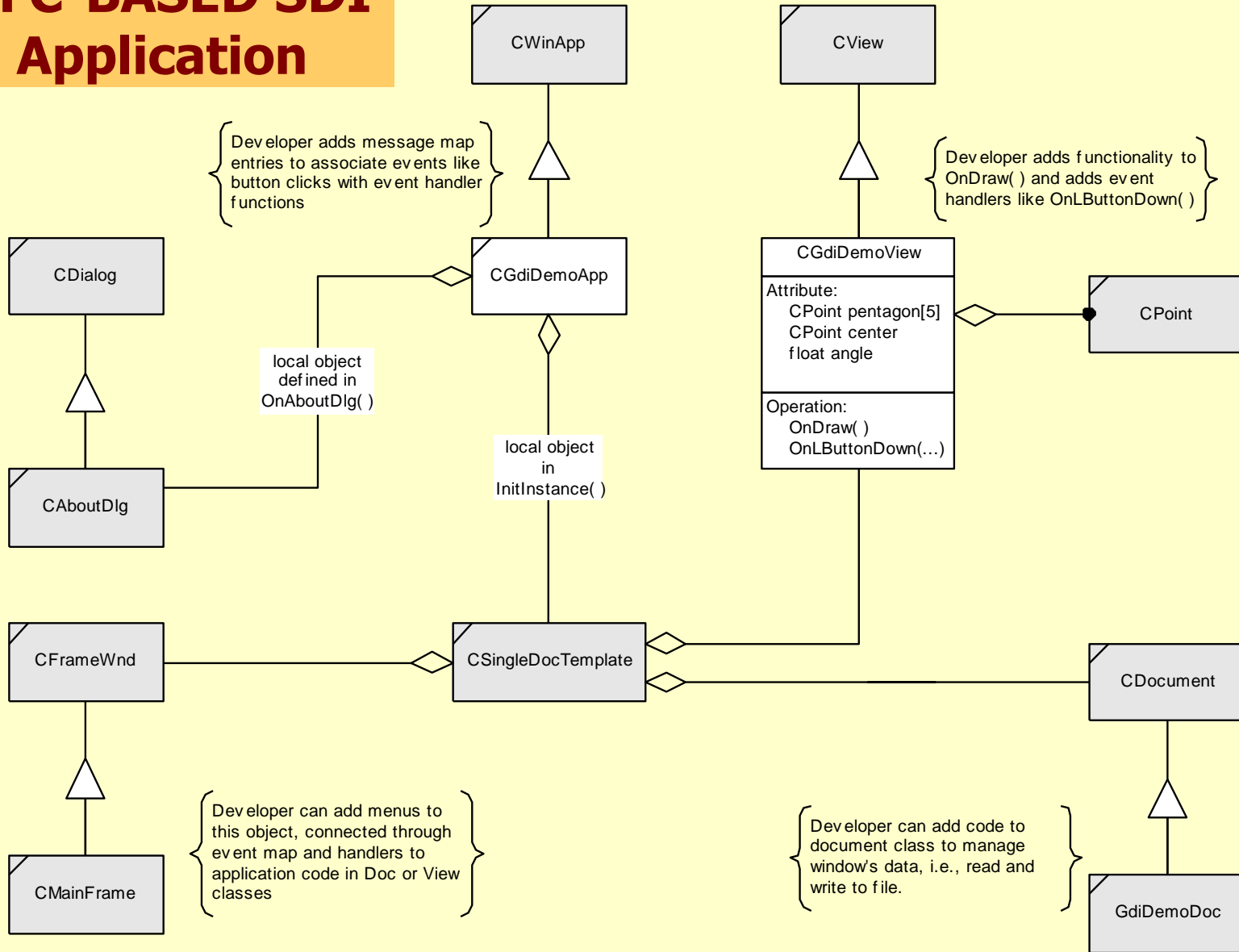


Where is Example Code?

- CSE681/code/MinWin
- CSE778/Lecture1/BasicWindows/MFCWin
- CSE778/Lecture1/MFCDialog
- CSE778/Lecture1/MFCFrameWindow
- CSE778/Lecture1/DataViz
- CSE681/code/WinFormDemo

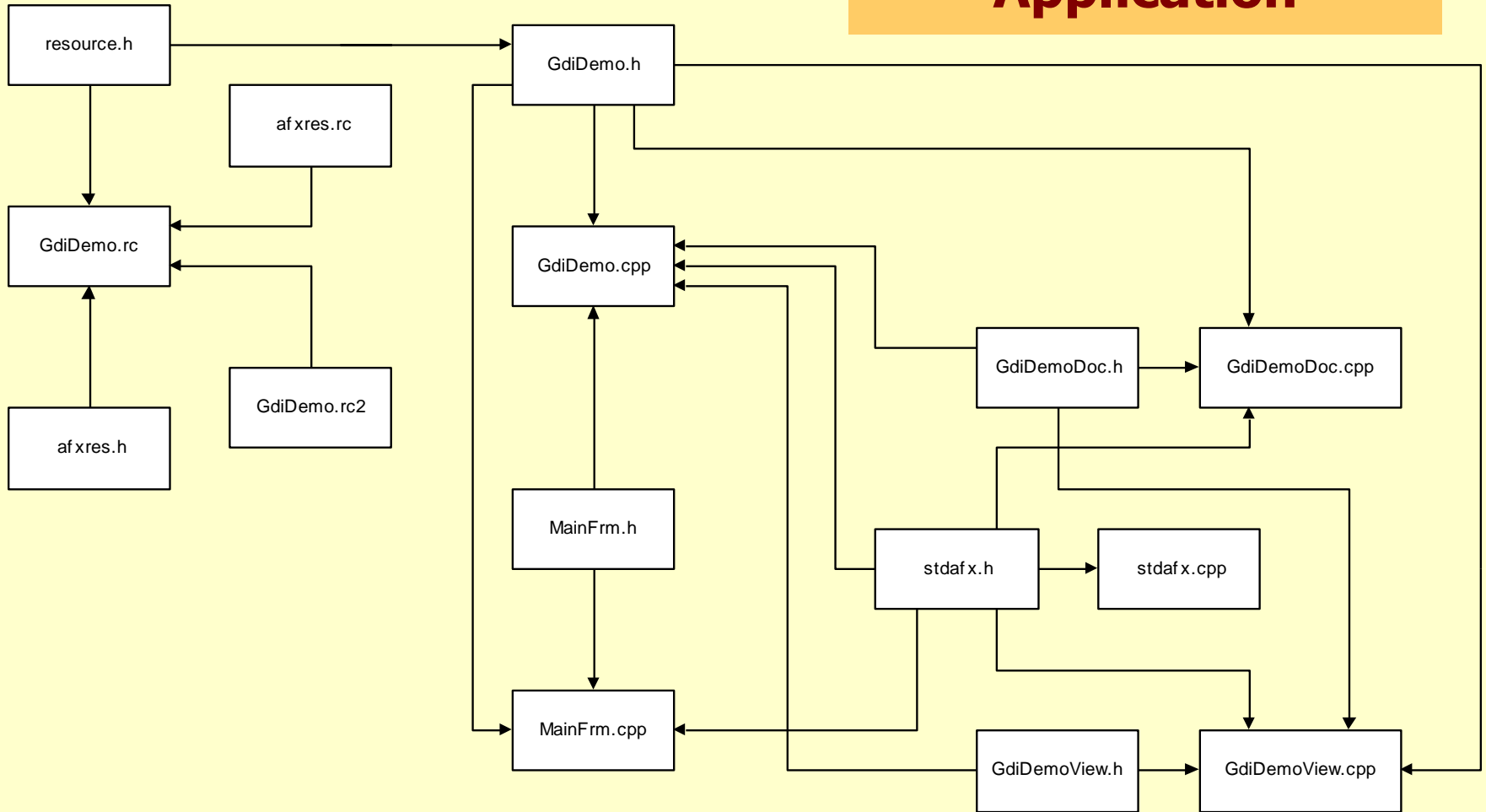


MFC-BASED SDI Application



GdiDemo Logical Structure
generated by appwizard, modified by developer

MFC-Based SDI Application



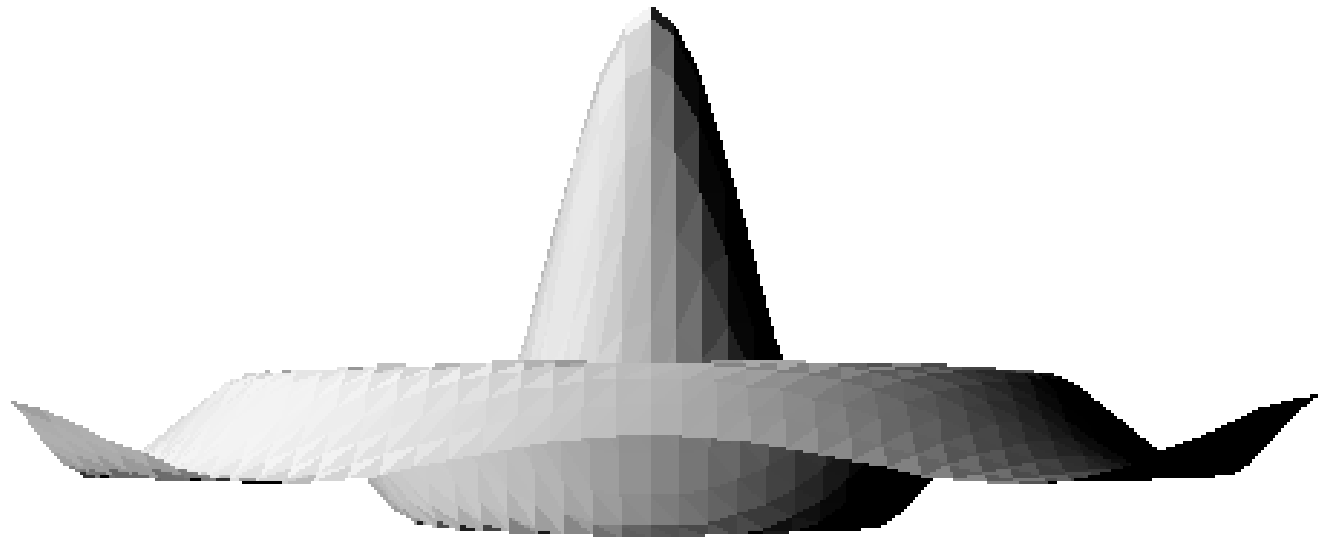
GdiDemo Physical Structure
generated by appwizard

dataViz




file rotate translate scale

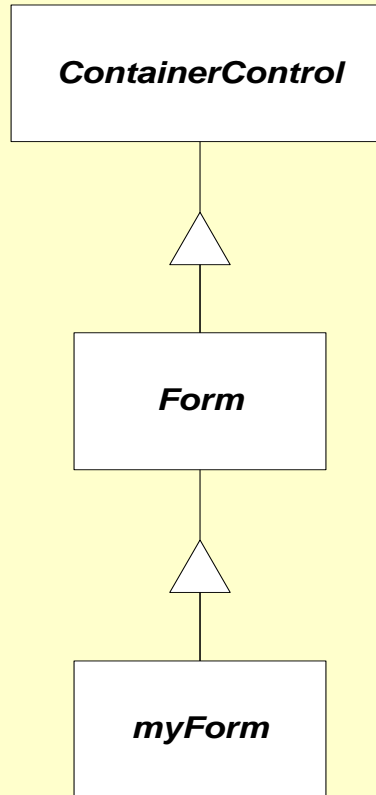
screen position { 2760 pixels mag, 90 deg azimuth, 0 deg elev }
data position { 0 pixels in X, 0 pixels in Y, 0 pixels in Z }



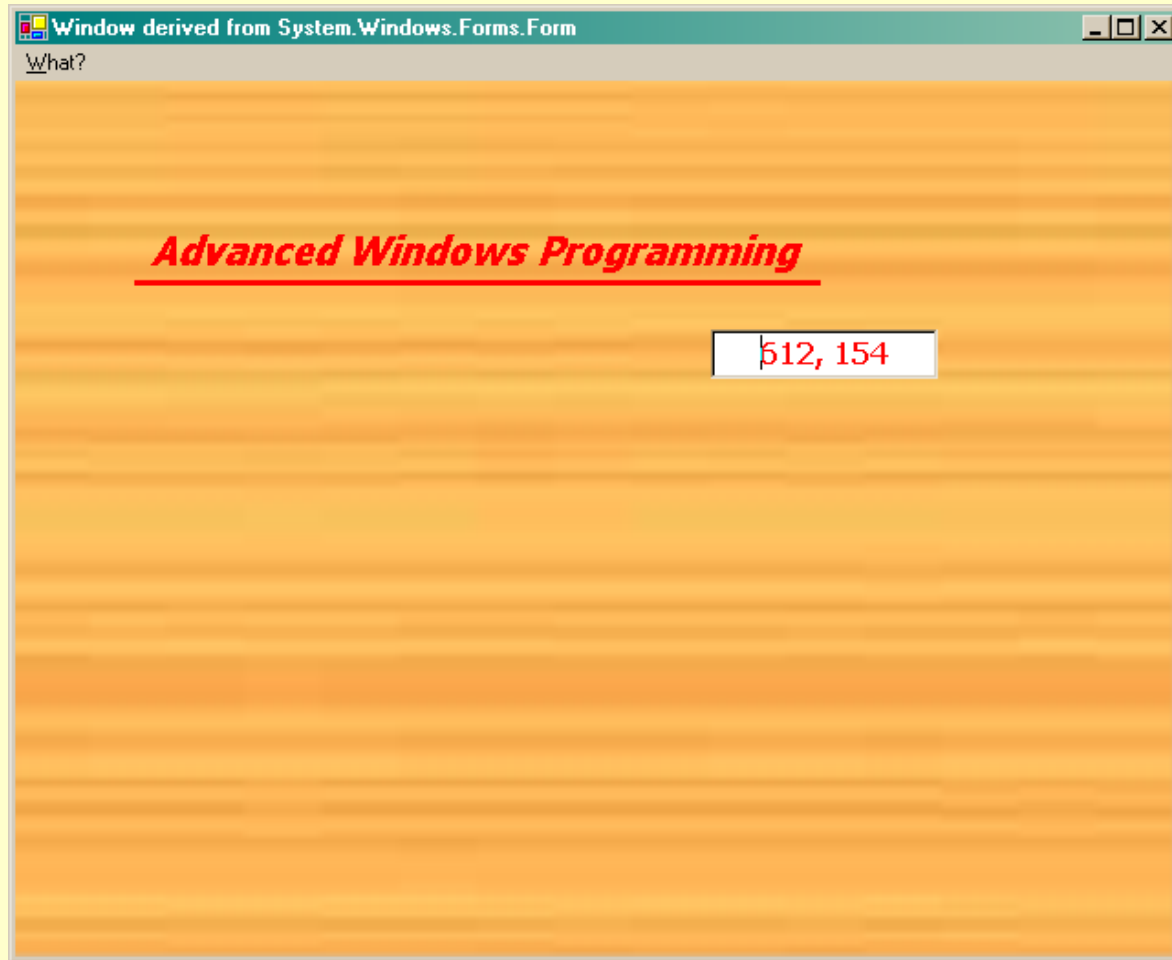
Where is Example Code?

- CSE681/code/MinWin
- CSE778/Lecture1/BasicWindows/MFCWin
- CSE778/Lecture1/MFCDialog
- CSE778/Lecture1/MFCFrameWindow
- CSE778/Lecture1/DataViz 
- CSE681/code/WinFormDemo

WinForm-Based Application

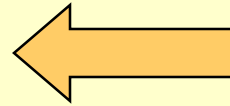


WinForm-Based Application



Where is Example Code?

- CSE681/code/MinWin
- CSE778/Lecture1/BasicWindows/MFCWin
- CSE778/Lecture1/MFCDialog
- CSE778/Lecture1/MFCFrameWindow
- CSE778/Lecture1/DataViz
- CSE681/code/WinFormDemo



End of Presentation