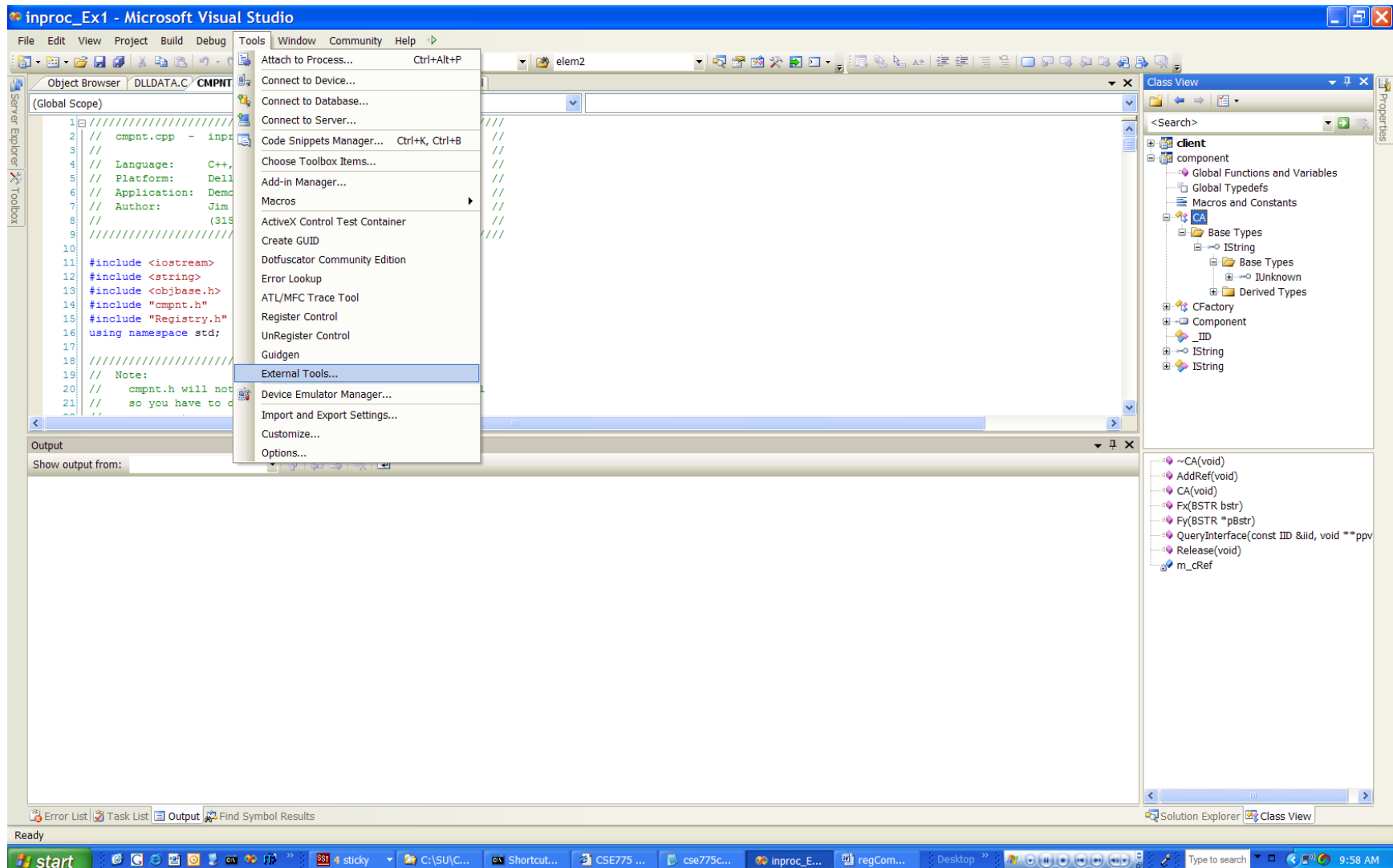


***Add IDE Commands to (un)register control and Create GUID***

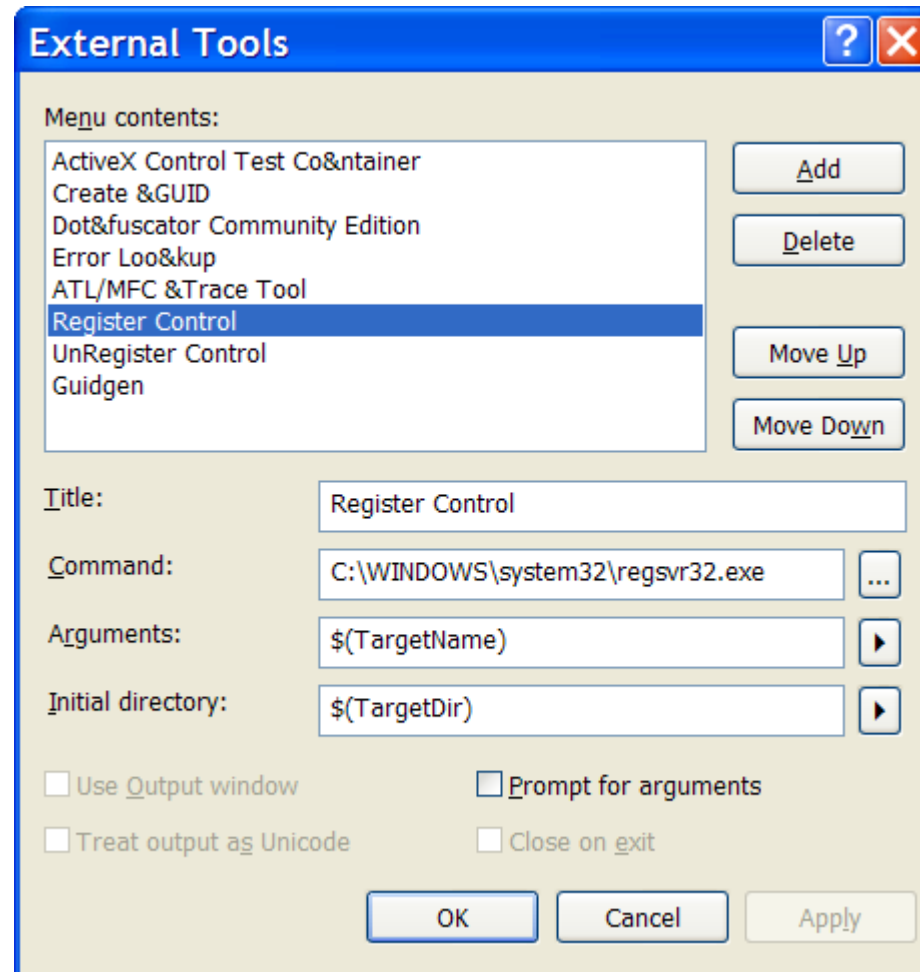
***Add External Tools  
To  
Visual Studio Tools Menu***

Jim Fawcett  
CSE775 – Distributed Objects  
Spring 2012

# Add IDE Commands to (un)register control and Create GUID



## ***Add IDE Commands to (un)register control and Create GUID***



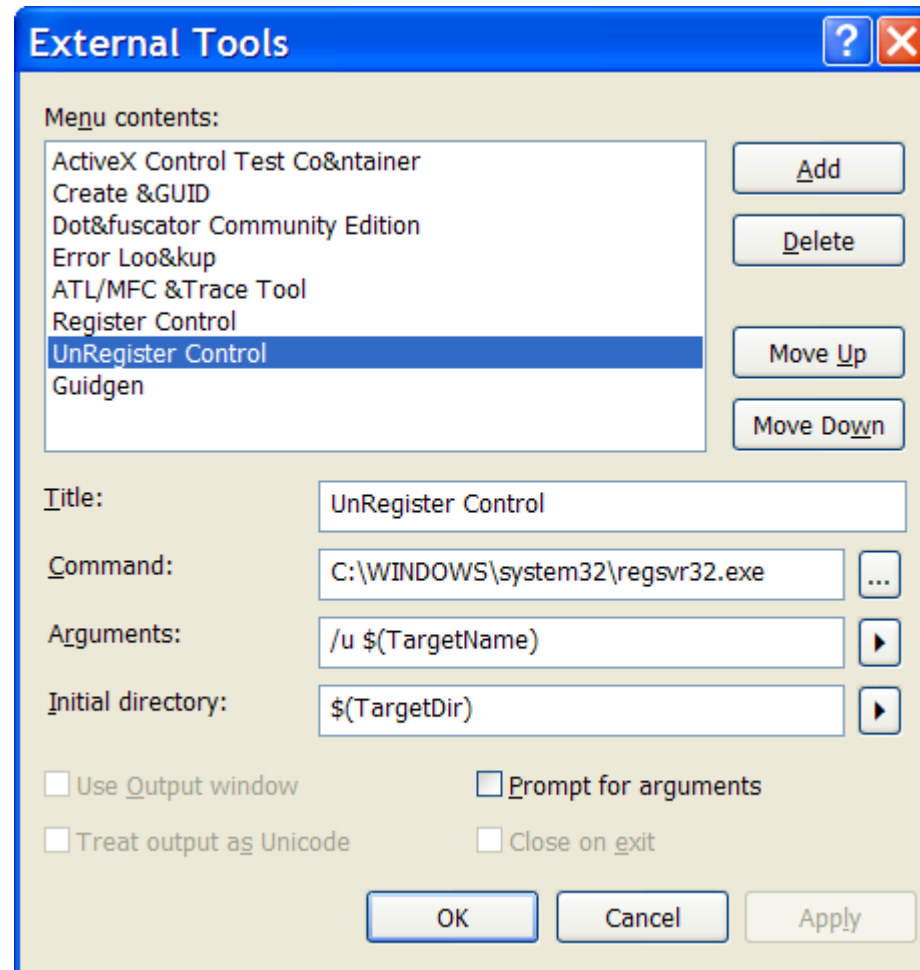
# Add IDE Commands to (un)register control and Create GUID

The screenshot displays the Microsoft Visual Studio IDE with the following components:

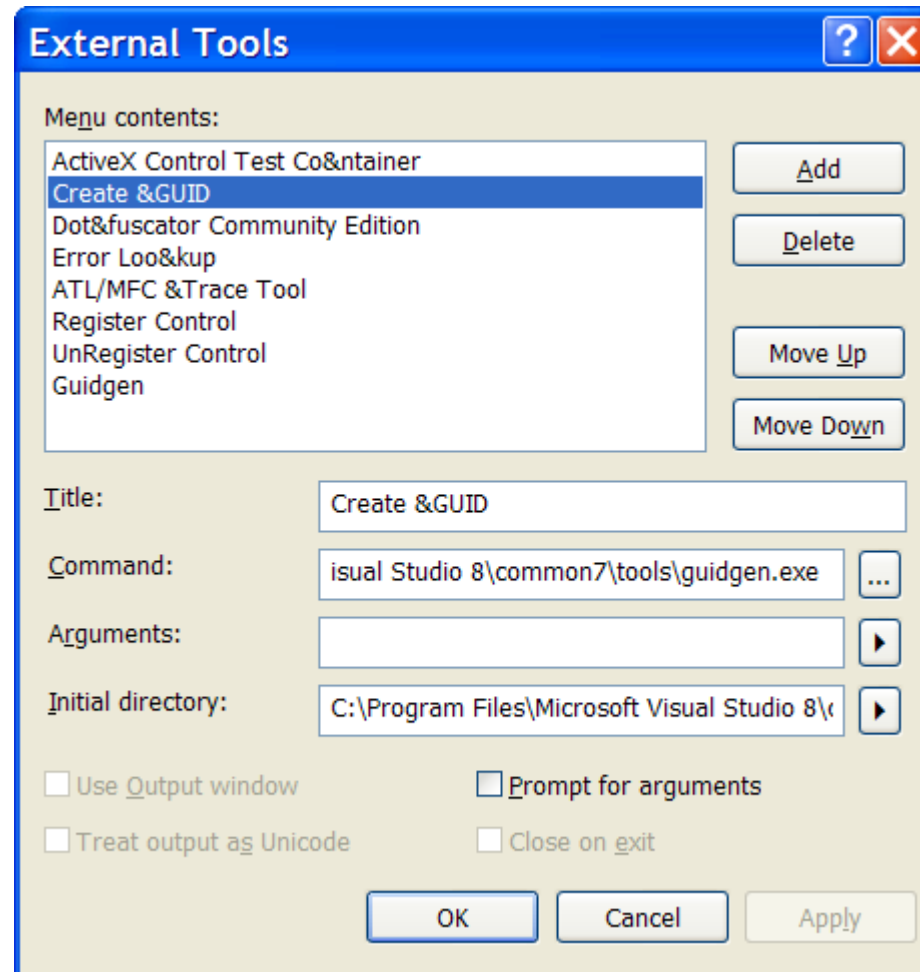
- Code Editor:** Shows the source code for `cmpnt.cpp`. The code includes headers for `<iostream>`, `<string>`, `<objbase.h>`, `cmpnt.h`, and `Registry.h`. It defines a component with a friendly name "CSE791 - inproc1\_Ex1" and a ProgID "inproc1\_Ex1".
- Class View:** Shows the project structure, including the `client` project and its various components like `CA`, `Base Types`, `CFactory`, `Component`, `_IID`, `IString`, and `IString`.
- Output Window:** Shows the build output, including the command `1>Embedding manifest...` and the message `1>Build log was saved at "file:///c:/Users/CSE775/Code/inproc_Ex1/component/Debug/BuildLog.htm"`. The output concludes with `===== Rebuild All: 1 succeeded, 0 failed, 0 skipped =====`.
- RegSvr32 Dialog:** A small dialog box titled "RegSvr32" is displayed in the center, showing an information icon and the message "DllRegisterServer in component succeeded." with an "OK" button.

The status bar at the bottom indicates "Rebuild All succeeded" and shows the current file position as "Ln 62 Col 1 Ch 1 INS".

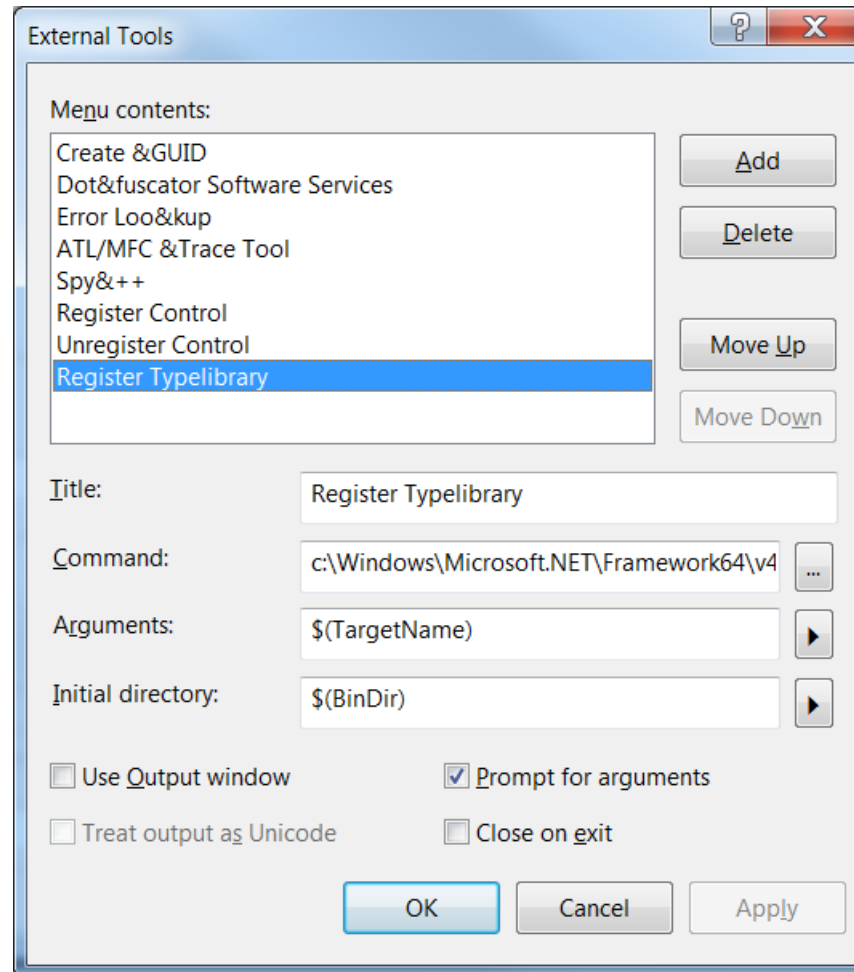
## ***Add IDE Commands to (un)register control and Create GUID***



## ***Add IDE Commands to (un)register control and Create GUID***



## ***Add IDE Commands to (un)register control and Create GUID***



## ***Add IDE Commands to (un)register control and Create GUID***

