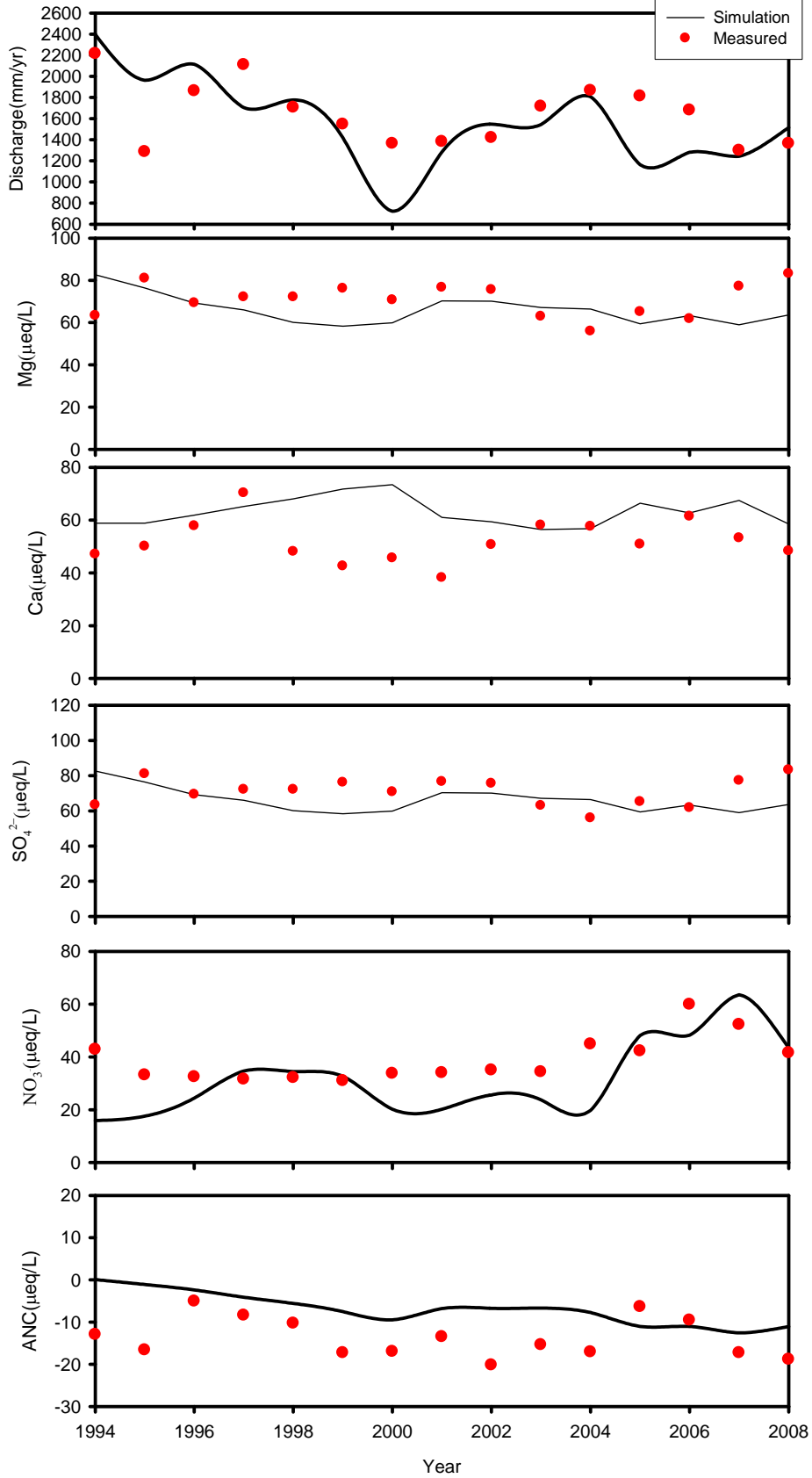
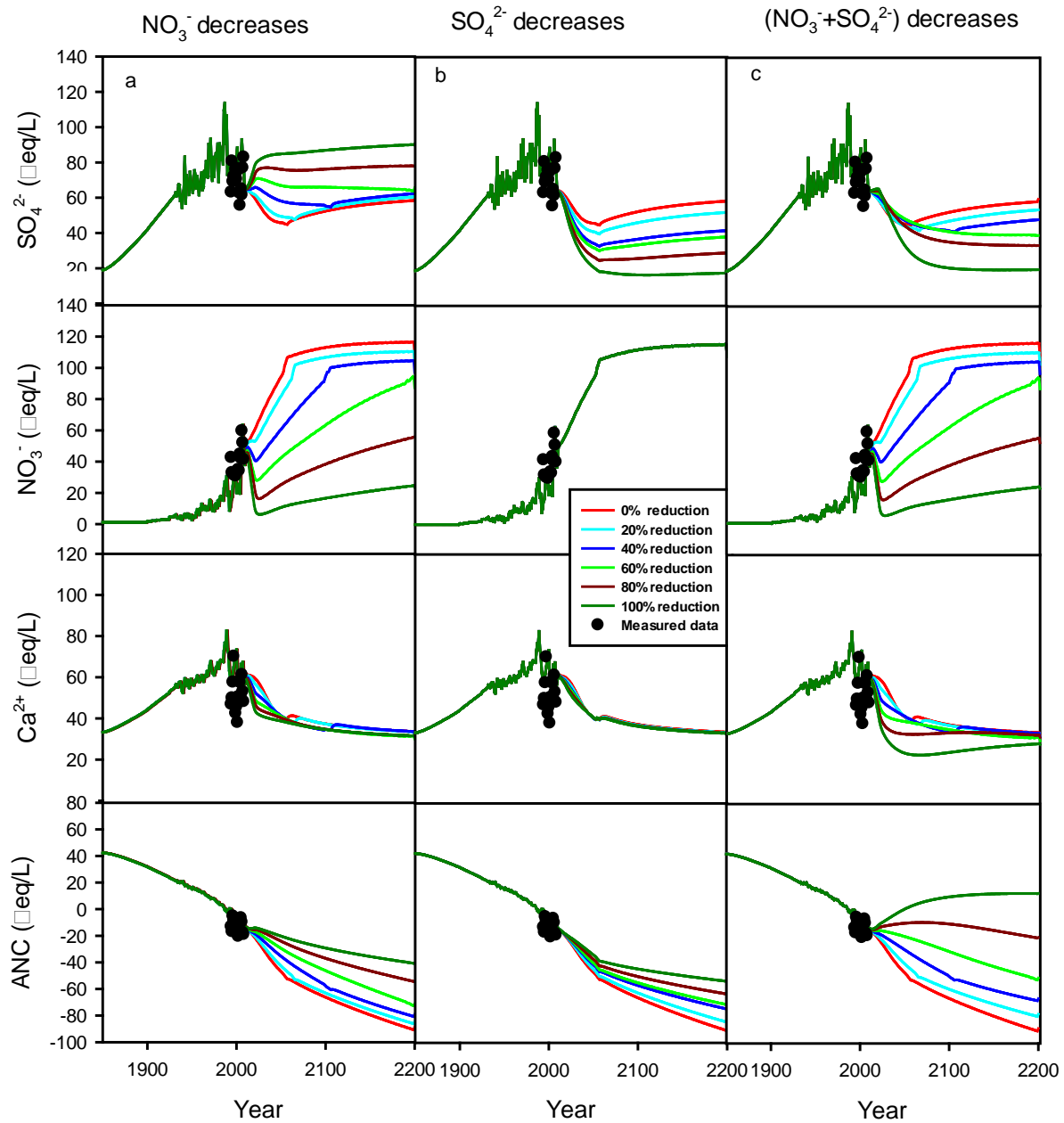


Walker Camp





Time series of SO_4^{2-} , NO_3^- , Ca^{2+} and ANC for Walker Camp Prong that include hindcast and future projections to atmospheric deposition decreases in a) NO_3^- only; b) SO_4^{2-} only; c) combination of ($\text{NO}_3^- + \text{SO}_4^{2-}$). Also shown are measured values.