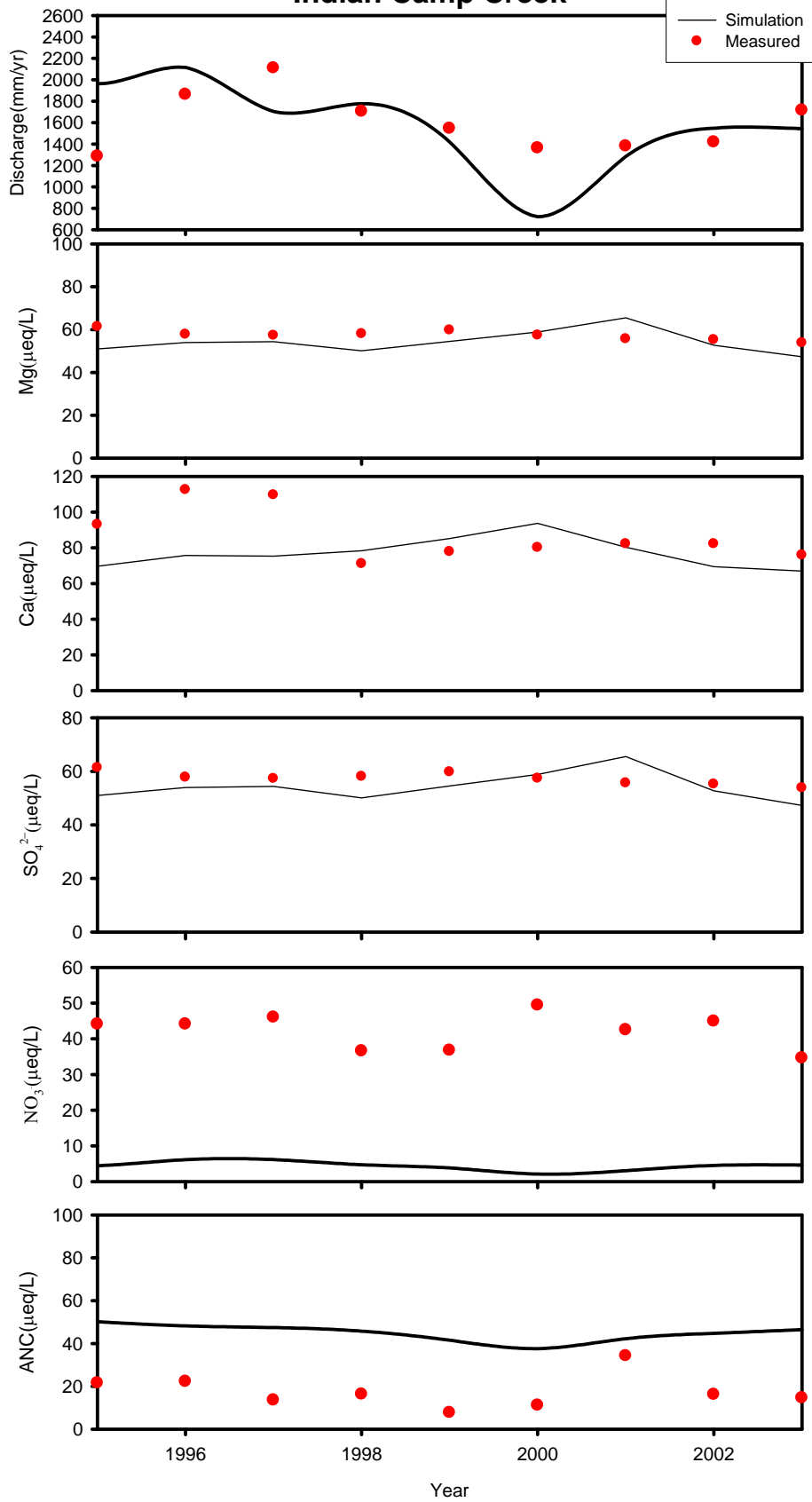
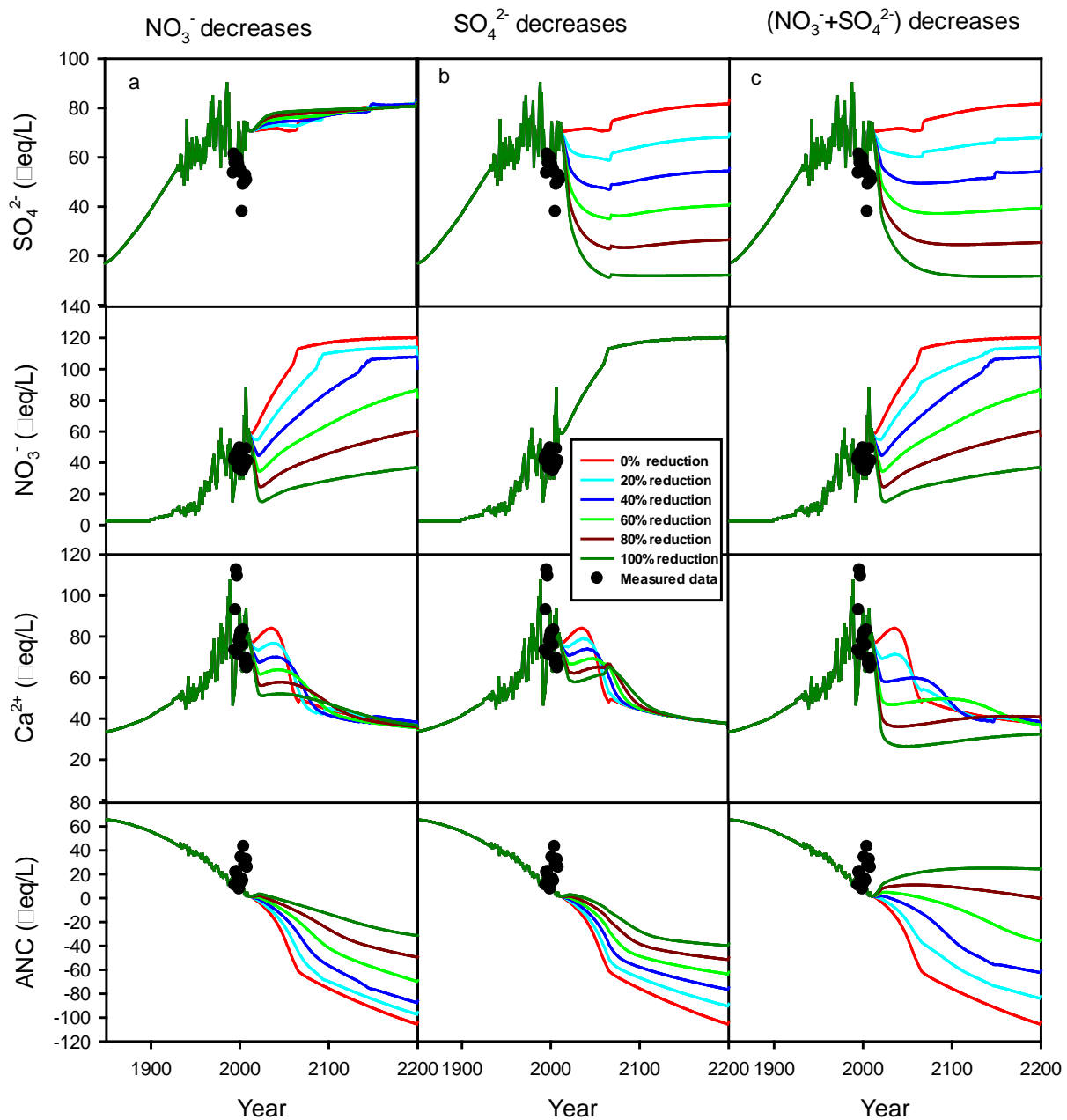


# Indian Camp Creek





Time series of  $\text{SO}_4^{2-}$ ,  $\text{NO}_3^-$ ,  $\text{Ca}^{2+}$  and ANC for Indian Camp Creek that include hindcast and future projections to atmospheric deposition decreases in a)  $\text{NO}_3^-$  only; b)  $\text{SO}_4^{2-}$  only; c) Combination of  $(\text{NO}_3^- + \text{SO}_4^{2-})$ . Also shown are measured values.